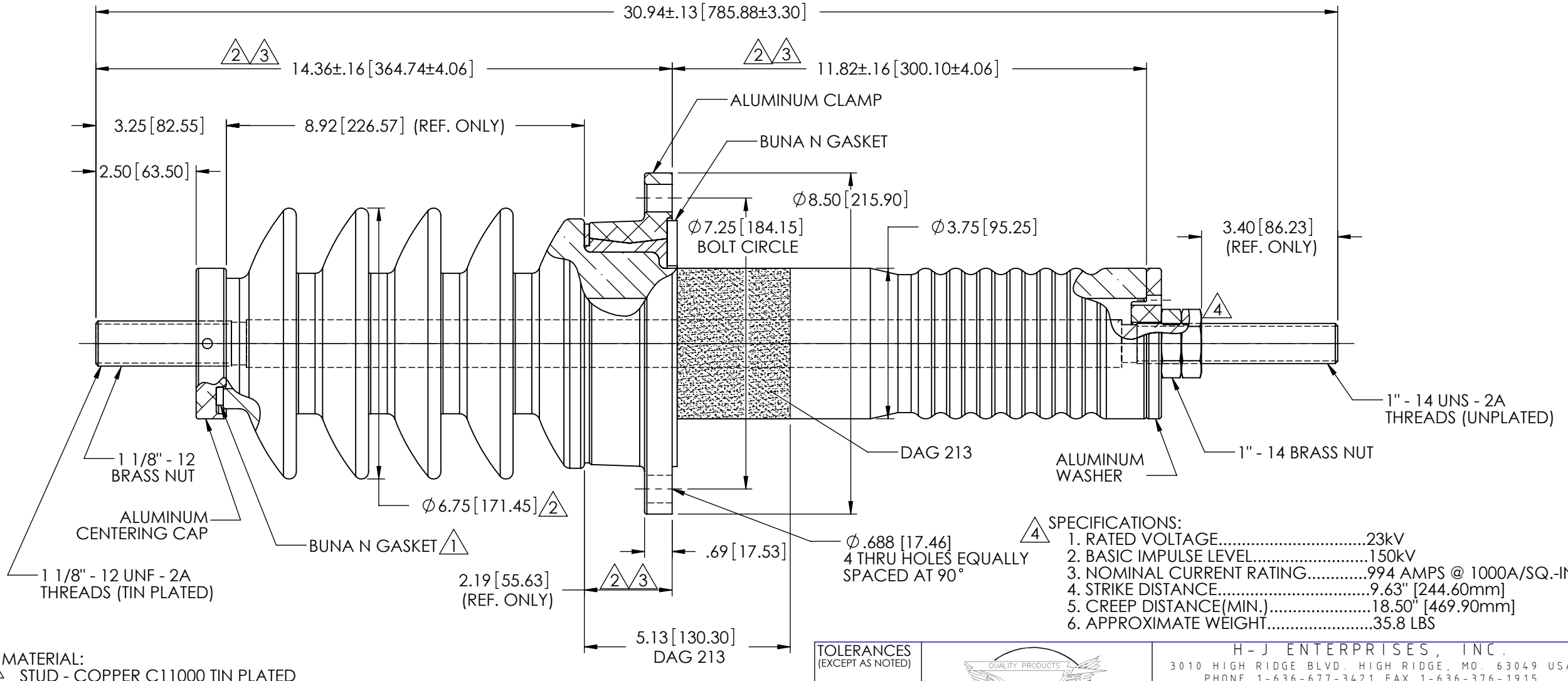


REVISIONS					
REV.	DATE	ECN #	DESCRIPTION	BY	APPROVED
1	11-21-03	HJ03-117	ADDED GASKET NOTE.	CJT	SP
2	7-19-04	HJ04-122	REVISED PORCELAIN AND REDIMENSIONED.	JRM	SP
3	10-9-06	HJ06-071	REVISED DIMENSIONS.	CJT	JM
4	4-28-09	HJ09-017	ADDED JAM NUT, MATERIAL, & SPECIFICATIONS.	JH	JFS



- 4 SPECIFICATIONS:
1. RATED VOLTAGE.....23kV
  2. BASIC IMPULSE LEVEL.....150kV
  3. NOMINAL CURRENT RATING.....994 AMPS @ 1000A/SQ.-IN.
  4. STRIKE DISTANCE.....9.63" [244.60mm]
  5. CREEP DISTANCE(MIN.).....18.50" [469.90mm]
  6. APPROXIMATE WEIGHT.....35.8 LBS

4 MATERIAL:  
STUD - COPPER C11000 TIN PLATED

PORCELAIN NOTES:  
1. WET PROCESS ELECTRICAL PORCELAIN.  
2. GRAY GLAZE MUNSELL 5BG 7.0/0.4  
3. TOLERANCE ±3% WITH NOTHING LESS THAN ±.03", UNLESS OTHERWISE NOTED ON DRAWING.

**PROPRIETARY AND CONFIDENTIAL**  
THE INFORMATION CONTAINED IN THIS DRAWING IS THE SOLE PROPERTY OF H-J ENTERPRISES, INC. ANY REPRODUCTION IN PART OR AS A WHOLE WITHOUT THE WRITTEN PERMISSION OF H-J ENTERPRISES, INC. IS PROHIBITED.

TOLERANCES (EXCEPT AS NOTED)	
DECIMAL	
.X	±.1
.XX	±.06
.XXX	±.03
ANGULAR	
+/- 1°	



H - J ENTERPRISES, INC.  
3010 HIGH RIDGE BLVD. HIGH RIDGE, MO. 63049 USA  
PHONE 1-636-677-3421 FAX 1-636-376-1915

**23kV 150kV BIL COVER BUSHING**

MATERIAL (SEE DRAWING)		
CHK'D	APP'D	DRAWING NO.
DRAWN BY CJT	DATE 7-3-03	SCALE N.T.S.
		AS1437-001